

## INFO & TECHNICAL SPECIFICATIONS

# Welcome to Danspunt!

This document contains practical and technical information about our building.

### Address

Sint-Salvatorstraat 18/001 A

9000 Ghent



## Accessibility

### By public transport

You can reach Dok-Noord by public transport in the following ways:

- **bus:** Bus P4 and 5 or bus 55 to the ‘Gent Tolpoort’ stop (Tolhuislaan), a 5-minute walk away
- **tram:** Tram line 4 in Sint-Salvatorstraat is currently suspended, so you can only rely on buses.
- **trein:**
  - It is a 15-minute walk from Gent-Dampoort station.
  - From Gent-Sint-Pieters station, take:
    - Bus P4 towards Fratersplein to the ‘Gent Tolpoort’ stop, a 5-minute walk away.
    - Bus 55 towards Zelzate to the ‘Gent Tolpoort’ stop, a 5-minute walk.

## By car

Drive via Dampoort or via the R4 and Kennedylaan.

## Parking

Indigo underground parking (paid) under the Dok Noord shopping center. - in Sint-Salvatorstraat and the surrounding streets, or at the docks.

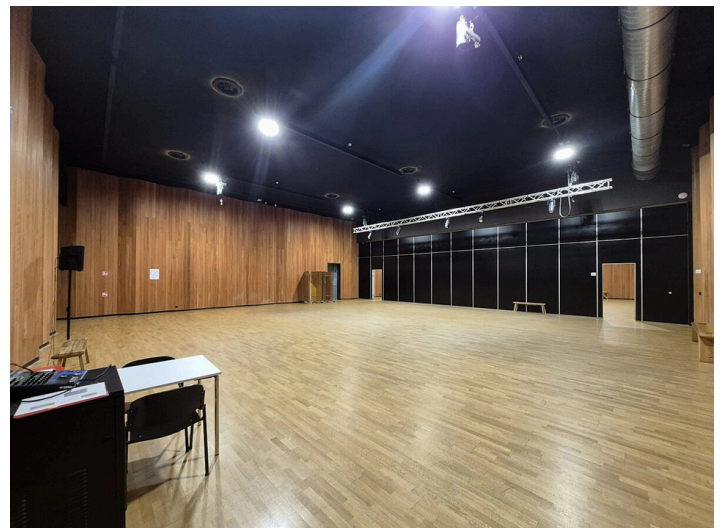
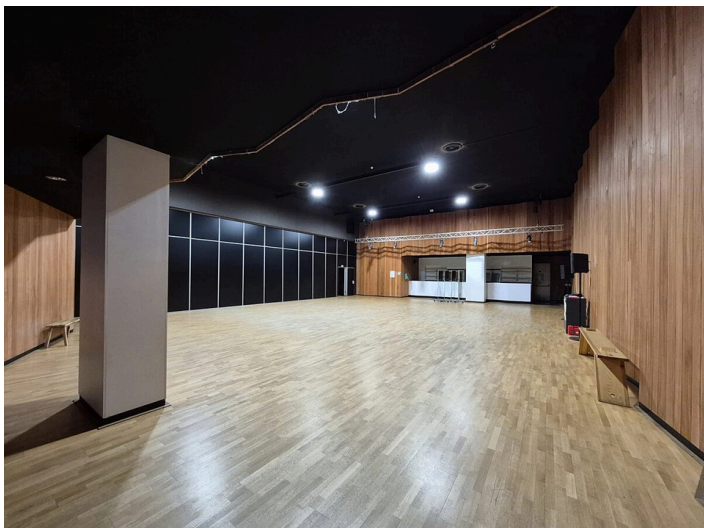
- This neighborhood is located in the orange parking zone. Parking is paid from 9 a.m. to 11 p.m., except on Sundays and public holidays.
- Only loading and unloading is permitted in front of the building.

**Bicycles** must always be parked in the designated bicycle parking area.

# Studios

Danspunt has two studios in its building on Sint-Salvatorstraat. Both studios:

- are 14 m wide, 15.85 m long, and 6 m high
- are separated by an acoustic partition wall - have a maximum capacity of 200 people
- are wheelchair accessible
- have Wi-Fi



## Studio 1

## Studio 2

Studio 1 is the first studio you encounter when entering Danspunt from the foyer. To reach Studio 2, walk through Studio 1 and take the door in the acoustic wall. Discretion is greatly appreciated here.

# Sound system

Each studio has two active QSC speakers, the technical specifications of which are provided below.

|                                     |   |
|-------------------------------------|---|
| Model                               | CP12  |
| Configuration                       | Two-way active loudspeaker  |
| LF Transducer:                      | 305 mm (12 in), cone  |
| HF Transducer:                      | 35.6 mm (1.4 in) compression driver   |
| Frequency Response (-6 dB)          | 49 - 20 kHz   |
| Frequency Range (-10 dB)            | 47 - 20 kHz   |
| Nominal Coverage Angle:             | 75° Axisymmetric  |
| Maximum Rated SPL:                  | 126 dB  |
| Amplifier:                          | Class D<br>Peak: 800 W (LF), 200 W (HF)   |
| Controls:                           | Power<br>2 × Gain<br>Mic Boost Push Switch<br>6-way Contour Selection Switch  |
| Indicators:                         | Power LED<br>2 × Input Signal LED<br>Input B MIC selected LED<br>Limiter active LED   |
| Connectors:                         | 2 × locking XLR/F 1/4" combo (Line Input and Mic/Line input)<br>1 × 3.5 mm TRS (Stereo Input)<br>1 × XLRM (Mix Output)<br>1 × IEC power connector |
| AC Power Input:                     | Universal power supply 100 – 240 VAC, 50 – 60 Hz  |
| AC Power Consumption (1/8th Power): | 100 VAC, 0.75A - 240VAC 0.31A   |
| Enclosure Material:                 | Polypropylene   |
| Attachment Points:                  | M8 threaded insert  |
| Color:                              | Black (RAL 9011)  |
| Grille:                             | 18 Gauge powder-coated steel  |
| Speaker Dimensions (H×W×D):         | 516 × 350 × 323 mm<br>20.3 × 13.8 × 12.7 in   |
| Carton Dimensions (H×W×D):          | 430 × 430 × 604 mm<br>17 × 17 × 23.8 in   |
| Net Weight:                         | 13.7 kg / 30.3 lb   |
| Shipping Weight:                    | 16.5 kg / 36.4 lb   |
| Regulatory:                         | EMC, UL, CB   |
| Optional Accessories:               | CP12 Tote, CP12 Outdoor Cover, CP12 Yoke  |



The QSC speakers are controlled via a simple Yamaha mixing console (photo above).

## **Mirrors**

Danspunt has 10 mobile mirrors:

- 8 x (1.8 m high and 1 m wide)
- 2 x (1.8 m high and 2 m wide)

## **Chairs, benches, and tables**

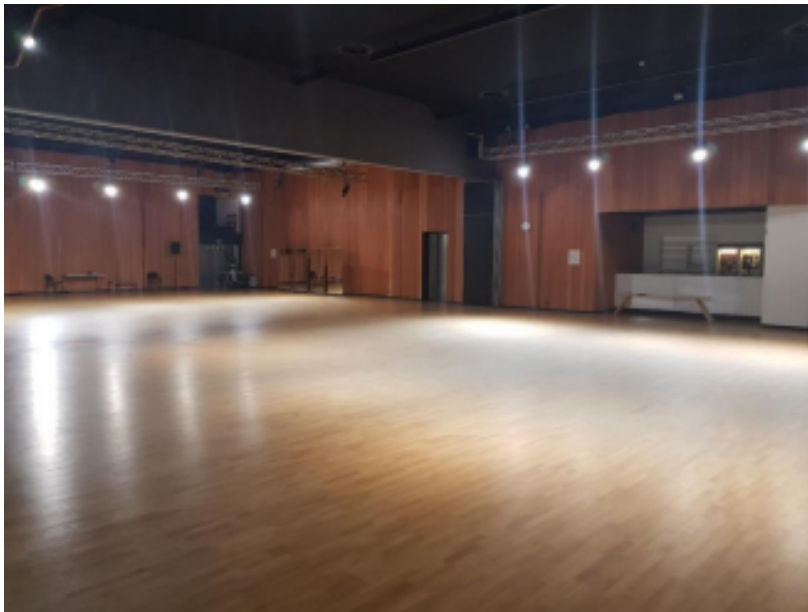
Danspunt has

- +/- 50 chairs
- 10 wooden benches, various lengths
- 8 folding white tables measuring 140 cm by 70 cm and 73 cm high

## **Partition wall**

The two studios are separated by an acoustic partition wall. This can be retracted to create one large hall with a maximum capacity of 450 people.

The wall is opened and closed in consultation with Danspunt.



## **First aid kit**

Each studio has a basic first aid kit. Please always report to Danspunt when any material from this kit has been used for any injury.

## **Bar**

Studio 1 has a bar. The bar is not available as standard.

## **Floor plan**

